

Advisory Group Purpose

Charter in packet

Provide recommendations to OCH staff and the Board of Directors on functions and elements of the community care hub, Olympic Connect.

Help build buy-in, trust, and ensure that we meet our goals and objectives inclusively and collaboratively. Consider big picture updates as well as more detailed elements related to engagement, sustainability, operations, capacity building, and workforce.

What county do you work and live in? (select all that apply)



Select all that describe the organization/Tribe you represent today (select all that apply)



Community-based organization



Hospital



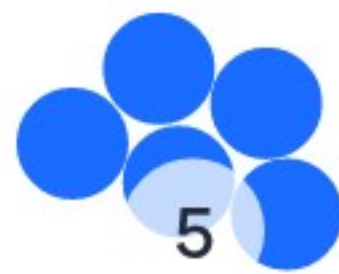
Local government



Mental health



Primary care



Public health



Social service



Substance use disorder

Select all that describe your role (select all the apply)



Executive/C-suite



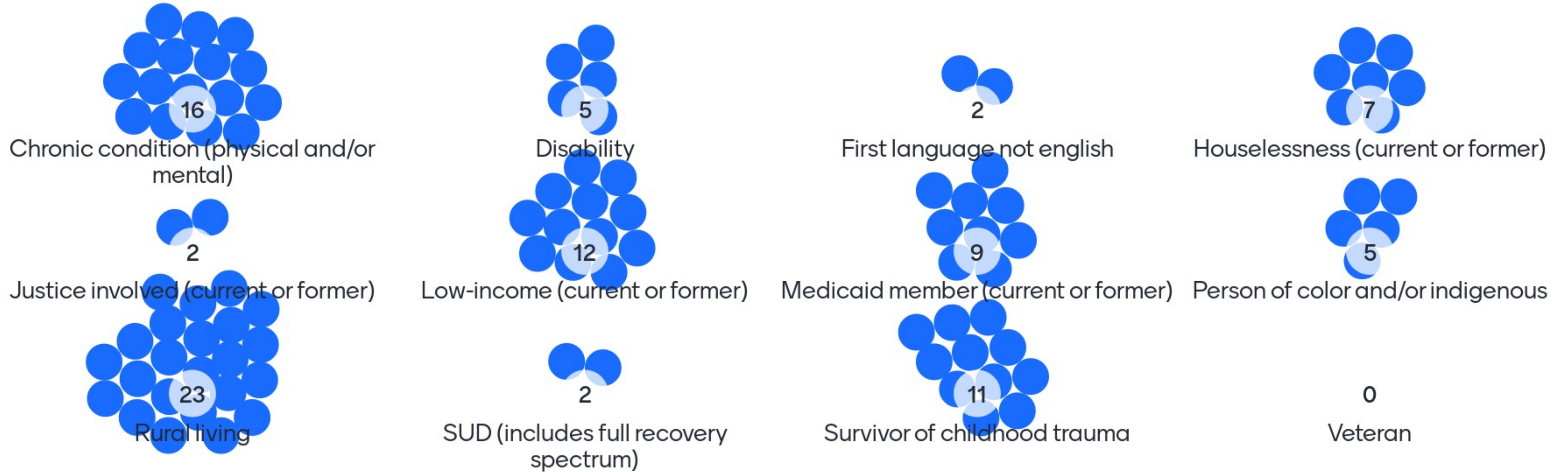
Management



On-the-ground

PLEASE SHARE AS YOU ARE COMFORTABLE. RESPONSES ARE ANONYMOUS.

Select all lived experience that apply to you



PLEASE SHARE AS YOU ARE COMFORTABLE. RESPONSES ARE ANONYMOUS.

Please share additional lived experience you have

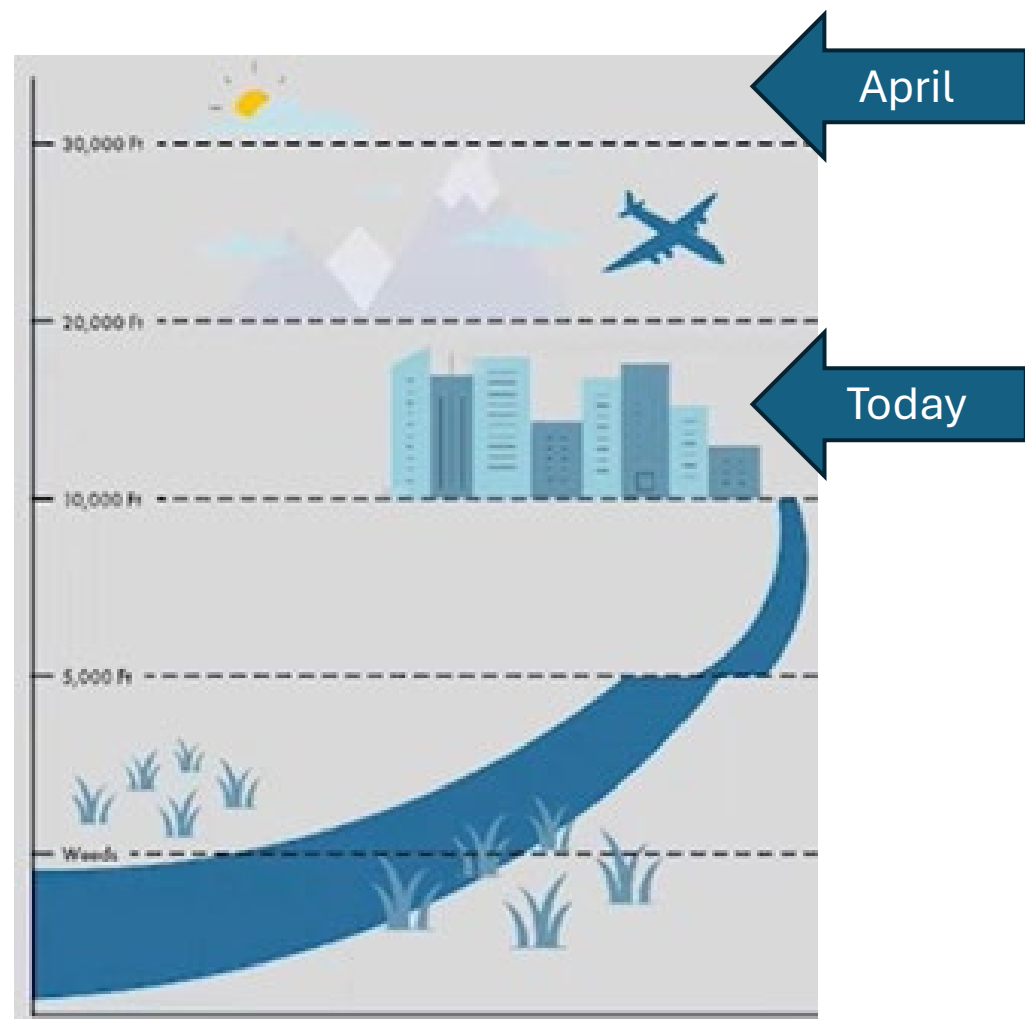
30 responses



Today's Purpose

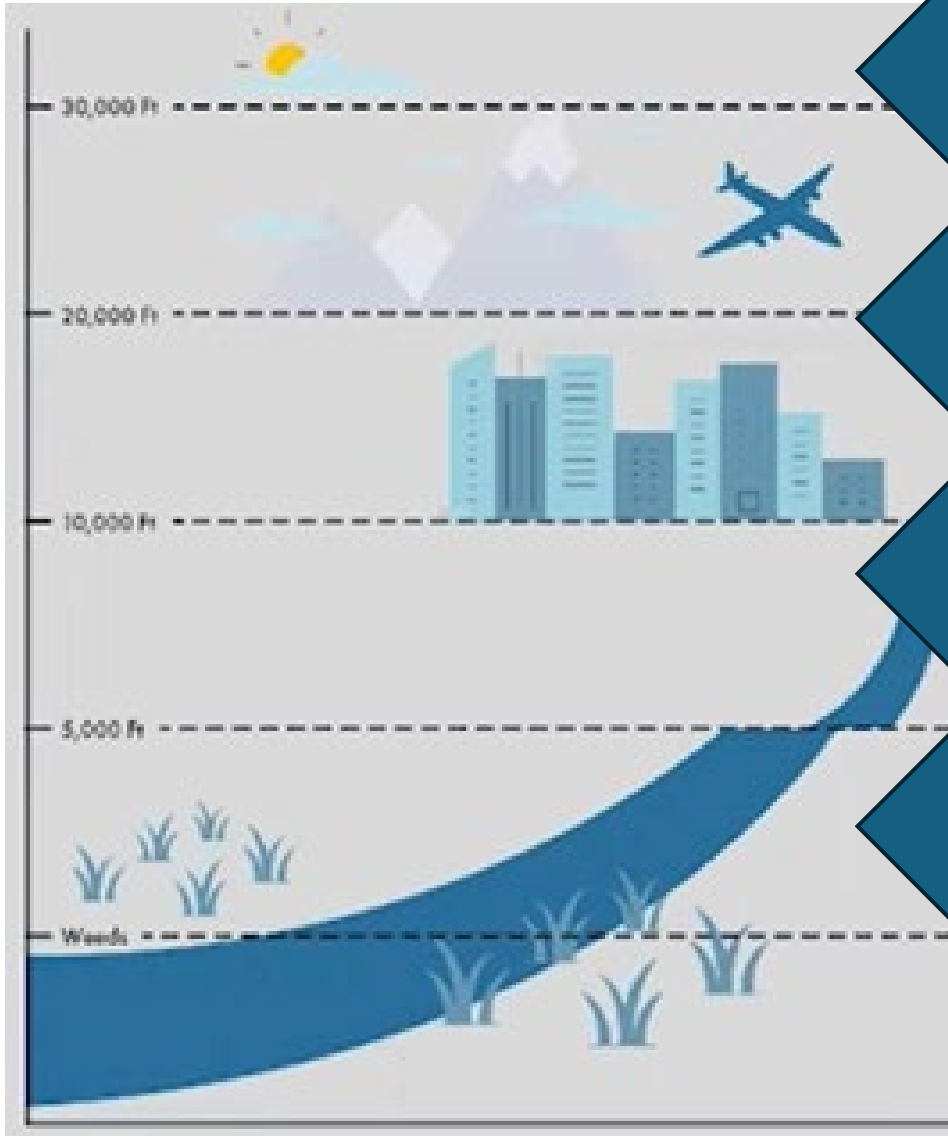
“We all have unique areas of expertise, but when you combine them together, it’s really better than the sum of the parts. That can dramatically improve the health of the community.”

*- Dr. Kate Weller,
North Olympic Healthcare Network*



Olympic Connect Planning Principles

- Center the CCH around **communities and clients**
- Implement from a **strengths-based approach** while addressing client needs
- Center **equity** through a Targeted Universalism approach
- Build the CCH slowly in alignment with **partner capacity** and alignment with state priorities
- Ensure that **funding adequately supports both partners** and OCH operations
- Ensure that the systems and workflows created under the CCH are **efficient, value-add, and non-duplicative of other systems**
- Collaboration with **state and local partners**
- Align the CCH with **Olympic region data, context, partner capacity, and needs of the region** while balancing requirements and needs of the state and other funders
- Regularly **evaluate and review CCH operations and workflows and make ongoing adjustments** as needed to better serve clients and support providers



Overarching goal: "Improve individual and population health and advance equity by addressing the determinants of health."

Hub specific goals: Improve health outcomes, lower costs, advance equity...ultimately working towards healthy people, thriving communities

Today: The problems we're trying to solve

How

The problems we're trying to solve

- Misaligned & unstable financing to address social needs
- Not enough services & resources to meet community needs
- Fragmented services, multiple coordinators
- Lack of sustainable & reimbursable funding for the community-based workforce
- Lack of system for cross-partner communication & to ensure that referrals are received & services offered (closed loop referrals)
- Lack of systemic county & regional data to demonstrate full need & progress toward shared goals
- "Social bed days" & inability to transition from higher levels of care due to social needs

Olympic Connect Infrastructure

Funding to
expand &
enhance
resources and
services

Funding to
build capacity
& train the
Community-
Based
Workforce

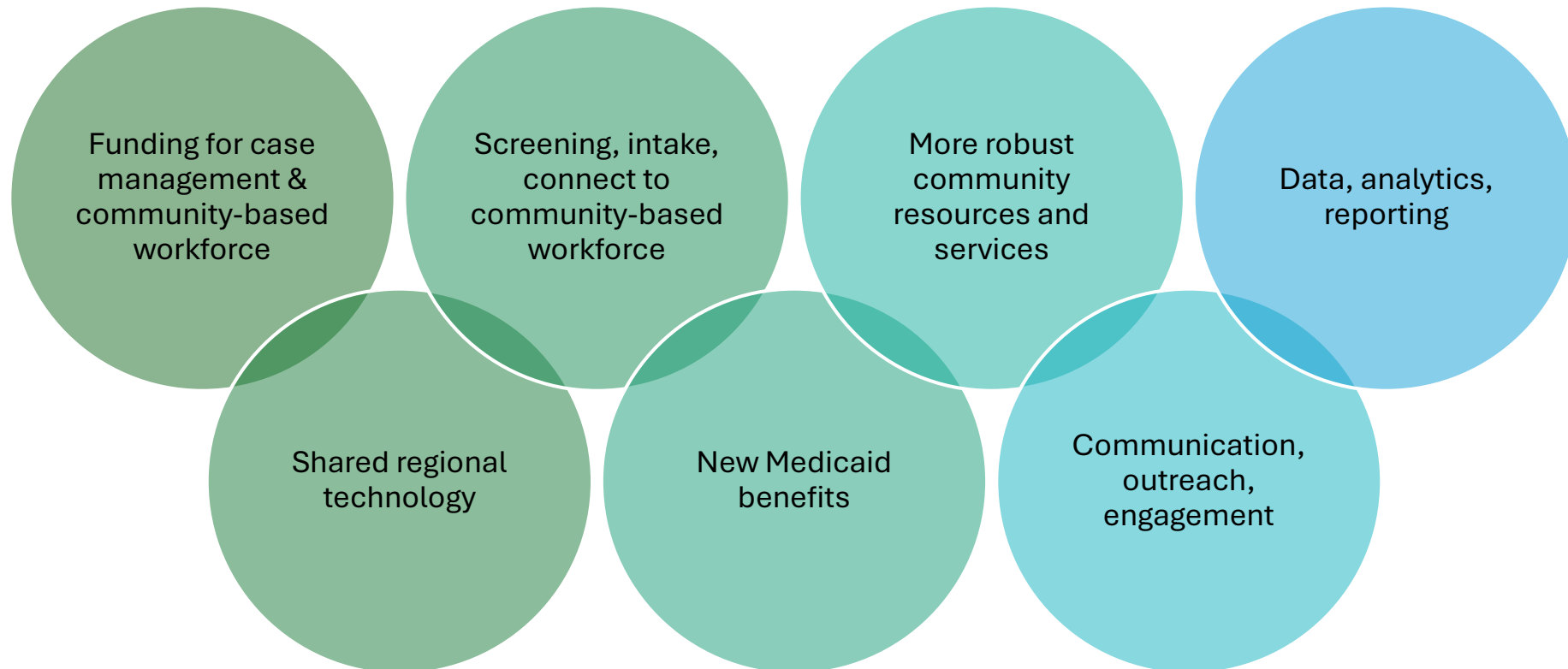
Shared
regional
technology

Outreach,
engagement,
communication

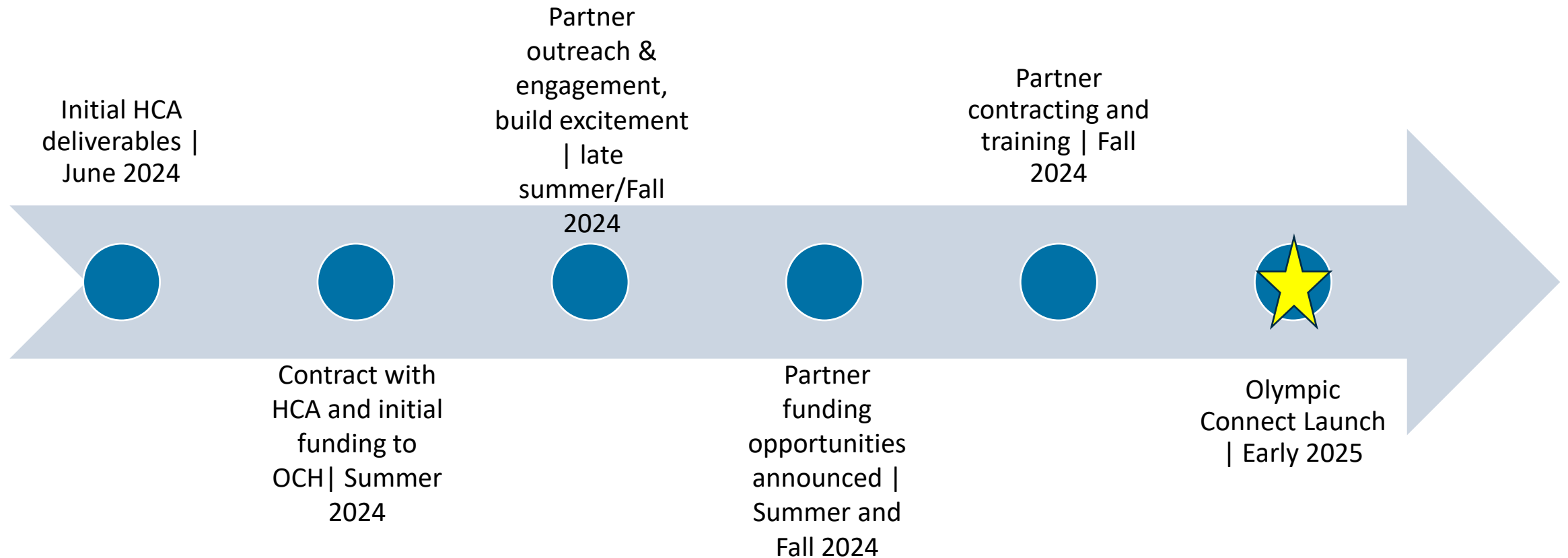
Data,
analytics,
reporting

Continuous
improvement

Olympic Connect Case Management



Olympic Connect: Current Timeline



Stay Connected

Email:

- Connect@OlympicCH.org

E-Newsletter:

- Upcoming funding opportunities, convenings, Olympic Connect updates, and more

Olympic Connect “Roadshow”:

- Invite OCH to come to your team meeting, coalition, etc. to learn more about the hub (Late summer and beyond)

Next Advisory Group meeting:

- September 25, Red Cedar Hall